

## Visual Inspection of Valves for Repair and Preventative Maintenance

Visual inspection of valves in the field and in the shop has never been easier or more affordable than with the new HandiScope™ hand-held portable microscope. Wearing down of the packing and signs of corrosion can be detected at an early stage enabling the valve to be replaced during a scheduled downtime instead of failing online causing potentially thousands of dollars in lost production. The HandiScope™ has a video output which allows for real time viewing on a TV or LCD projector. The image can be “freeze framed” on the monitor for closer inspection or for discussions with other maintenance personnel or during a training class.

For documentation purposes the images can be downloaded and stored using the optional PC interface kit.

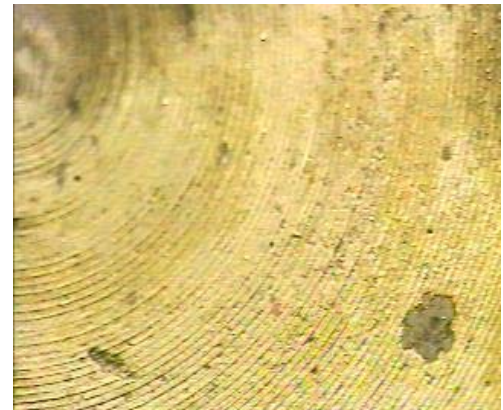


HandiScope™

The small size and portability of the unit means that you can take the microscope to where it is needed. It is a valuable tool in fault finding, inspections and repair.

### Applications:

- Wear
- Corrosion
- Making sure of correct Installation
- Wiring Inspection
- Training
- Field Service



Valve Plug Pitting

### Specifications:

Image Capture Element: 1/4" CCD with Complimentary Color Filter  
Total Image Element: 811(H) x 507(W)  
Refresh Rate: 30 Frames/second  
Magnification: 20x/50x Selectable  
Viewing Area (mm): 14x10.5/6x4.5  
Lighting: Internally Contained, 8 White LEDs  
Focus Distance: 0mm (contact) or 26mm (non-contact)  
Output: Standard NTSC, VBS IV[p-p]/75 ohm  
Interface: Standard RCA  
Power Supply: 5V, 3A output  
90-250 V, 50-60Hz AC Input  
Dimensions: Approx. 9 inches long x 2 inches diameter  
Weight: Approx. 0.5 pounds

431 Ohio Pike, Suite 192 South • Cincinnati, OH 45255  
1..888.237.9883 • 513.688.1351 • fax 513.688.1361. • Email reasley@fuse.net  
www.conferencepro.com